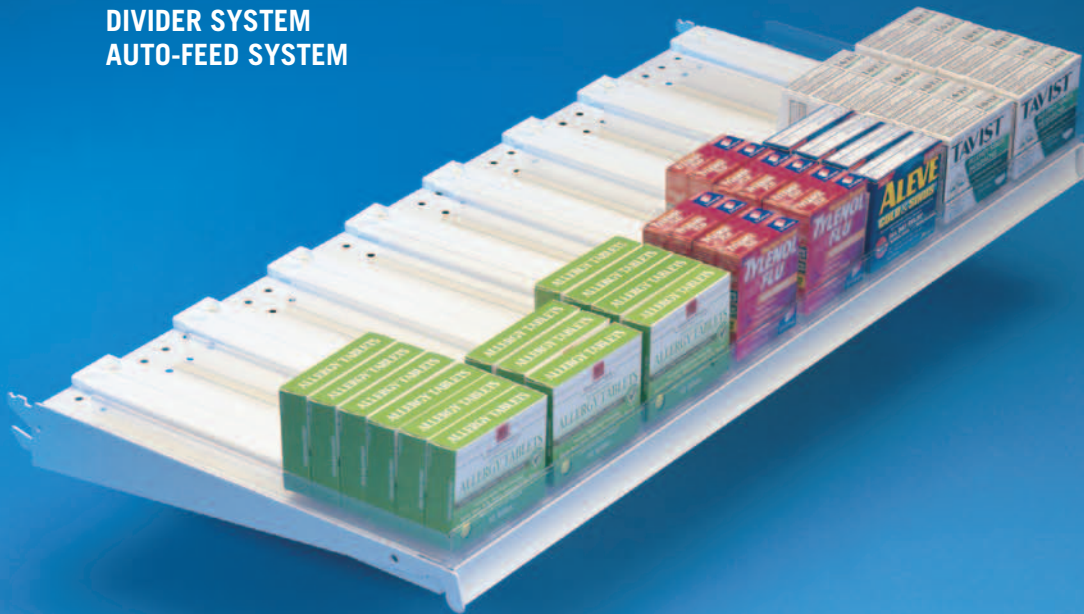


SHELF WORKS® SHELF MANAGEMENT SYSTEM EXTRUDED MODULAR SYSTEM

DIVIDER SYSTEM AUTO-FEED SYSTEM



Extruded Modular System

- Resilient extruded plastic for a flexible and forgiving merchandising frame. Extrusion allows Dividers and Rails to be manufactured to any length. The slim profile of dividers maximizes facings.
- Clean contemporary design.
- Quick snap-together installation.
- Back Rail optional; saves on cost in common applications
- Adjustable so the system accommodates any size item but is typically most effective with light products.
- The lowest cost pusher-fed system available.



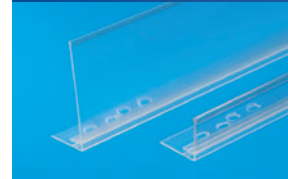
DIVIDERS:



LED 1" and 2.75" L-Divider

For small items. Clear; also solid color or two color. 1" & 2.75" high; 11", 13", 15", 17", and 19" lengths; others upon request. Adhesive tape; magnetic or foam tape or punch holes available.

FRONT RAILS /



HFR 1" and 2.75" Rail

Front product stop. Clear; also color or two color. 1" & 2.75" high; 3' and 4' lengths; others avail. Adhesive, magnetic or foam tape or punch holes available.

PUSHERS /



HFROP Back Pushpin Mount

Slides into front rail. White; colors available; minimums apply. 11", 13", 15", 17", & 19" lengths; others upon request. 5 standard spring strengths, others available.

BACK RAILS:

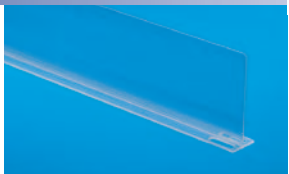


OPB Back Rail

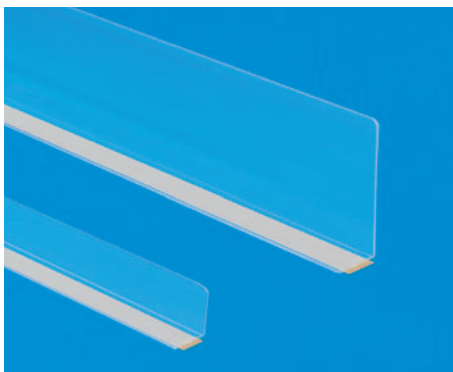
Secures the back of pushers for stability. Clear. 3' or 4' lengths; others upon request. Can be used only with the HFRTRIOP pusher in the Extruded system.



TWO STYLES



TED 2.75" High T-Divider
For use as a middle divider.
Clear; also solid color or two color. 2.75" high; 11", 13", 15", 17" and 19" lengths; others upon request. Adhesive tape; magnetic or foam tape or punch holes available.



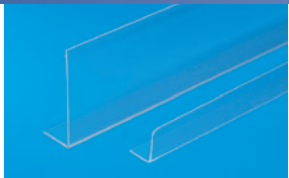
Clear Heat Bent Divider

A simple divider-only system for economical organization of products. No front rail, back rail or accessories needed. Mounts directly on shelf with 1/2" tape included.

Item No.	Description	Pack	Wt/ Ctn	Price per Each			
				100	1,000	5,000	10,000
Clear Heat Bent Dividers							
DVD38-TP-0292	1.5" x 11 1/2" Plastic Divider	100	5#	\$0.19	\$0.15	\$0.13	\$0.11
DVD114-TP-0343	4.5" x 13 1/2" Plastic Divider	100	12#	0.47	0.38	0.33	0.28
DVD114-TP-0445	4.5" x 17 1/2" Plastic Divider	100	14#	0.59	0.47	0.41	0.35
DVD114-TP-0546	4.5" x 21 1/2" Plastic Divider	100	17#	0.70	0.56	0.49	0.42

Clear Dividers with 1/2" tape for mounting to shelf.

PRODUCT STOPS: TWO STYLES



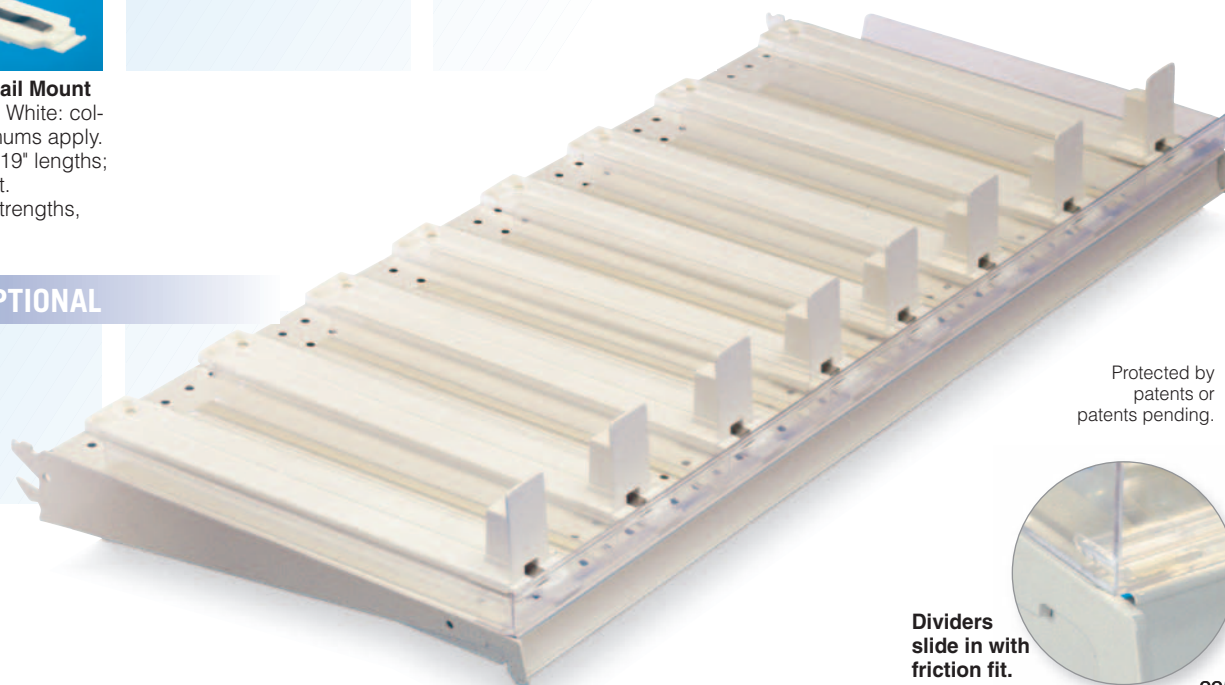
LED 1" and 2.75" Stop
Freestanding product stop.
Clear; also color or two color. 1" & 2.75" high; 3' and 4' lengths; others upon request. Adhesive, magnetic or foam tape or punch holes available.

SLIDES: TWO STYLES



HFRTRIOP Back Rail Mount
Slides into front rail. White; colors available; minimums apply. 11", 13", 15", 17", & 19" lengths; others upon request. 5 standard spring strengths, others available.

ONE STYLE OPTIONAL



Protected by patents or patents pending.

Dividers slide in with friction fit.

225

